

PARKSIDE ESTATES SUBDIVISION

LEGEND	
	SANITARY SEWER
	STORM SEWER
	POWER OVERHEAD
	BURIED ELECTRIC
	BURIED GAS
	BURIED TELEPHONE
	WATERMAIN
	FIBER OPTICS
	EDGE OF IRREGULARITIES
	CONTOUR LINE
	RECTANGULAR CATCH BASIN
	STORM MANHOLE
	ELECTRIC TRANSFORMER
	HYDRANT
	POWERPOLE
	SIGN
	TELEPHONE PEDESTAL
	WATER VALVE
	CEDAR TREE
	TREE
	3/4" O.D. IRON BAR FOUND
	COMPUTED PROPERTY CORNER
	1" I.D. IRON PIPE FOUND
	RECORDED AS

UNDERGROUND UTILITIES

THESE RECORD DRAWINGS HAVE BEEN PREPARED, IN PART, ON THE BASIS OF INFORMATION OBTAINED AND FURNISHED BY OTHERS. THE SURVEYOR AND HIS EMPLOYEES HAVE CONDUCTED VISUAL INSPECTIONS AND TESTS OF THE UTILITIES SHOWN AND HAVE INCORPORATED INTO THIS DOCUMENT AS A RESULT. SOME UTILITIES HAVE BEEN LOCATED BY WAYS PROVIDED BY OTHERS - LOCATIONS ARE APPROXIMATE. PRIVATE UTILITIES MAY EXIST BUT ARE NOT SHOWN. ON MAP, CONTACT DIGERS HOLDLINE FOR LOCATIONS. FIELD VERIFY SANITARY AND STORM SEWER PIPE SIZE AND LOCATION.

SURVEYOR'S CERTIFICATE

I, SCOTT GROHOLSKI, REGISTERED LAND SURVEYOR DO HEREBY CERTIFY THAT THIS IS A TRUE AND CORRECT REPRESENTATION OF THE SURVEY AND THE INFORMATION AS MADE BY ME ON JANUARY 16, 2007.

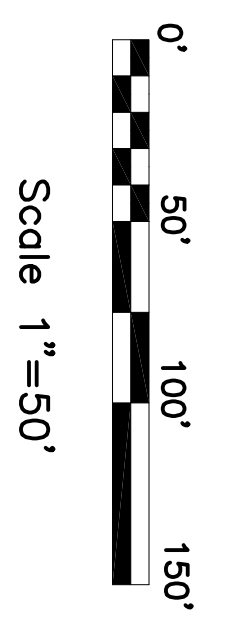
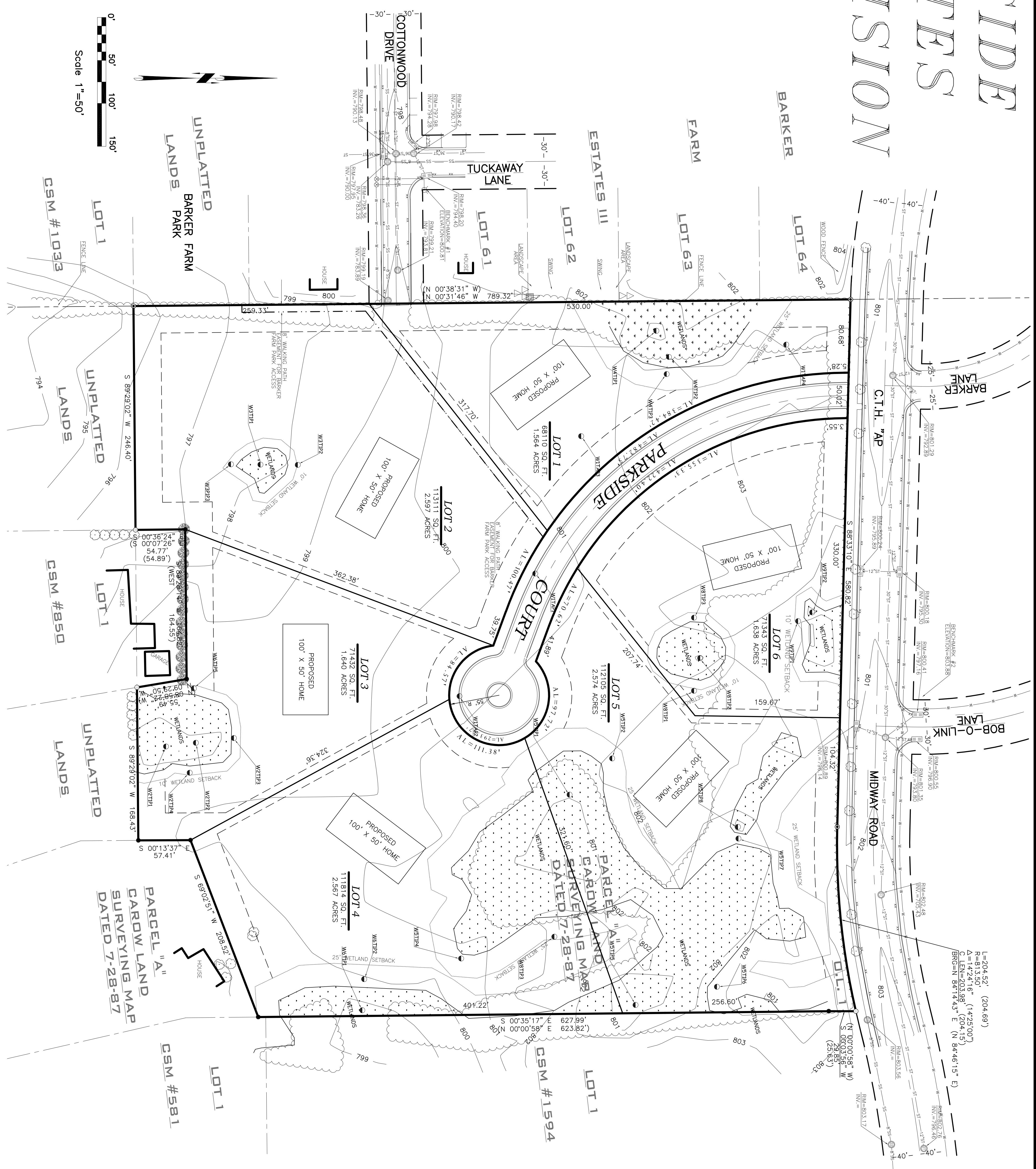
SCOTT GROHOLSKI, (# 2281)
REGISTERED LAND SURVEYOR

DESCRIPTION

BEING LOCATED IN THE WEST 1/2 OF THE NORTHWEST 1/4 OF SECTION 7, T20N, R8E, TOWN OF HARRISON, CALUMET COUNTY, WISCONSIN.

BENCH MARK

ELEVATIONS ARE BASED ON INFORMATION RECEIVED FROM THE CITY OF MENASHA ENGINEERING DEPARTMENT.
BENCHMARK #1
BURY BOLT OF HYDRANT LOCATED IN THE NORTHEAST CORNER OF SECTION 7, T20N, R8E, AND TUCKAWAY CT. INTERSECTION. ELEVATION=800.81
BENCHMARK #2
CORN OF HYDRANT LOCATED IN THE NORTHWEST CORNER OF T14P AND BOB-O-LINK LN. INTERSECTION. ELEVATION=803.88



L=204.52' (204.69')
R=813.50'
Δ=1424'1.6" (1425'00")
C LEN=203.98' (204.15')
BRC=N 84°46'15" E (N 84°46'15" E)

PARCEL "A"
CROWD LAND
SURVEYING MAP
DATED 7-28-87

PARCEL "A"
CROWD LAND
SURVEYING MAP
DATED 7-28-87

CIVIL ENGINEER
POB
Point of Beginning
TOPO

Land Surveying
Engineering
5709 Windy Drive, Suite D
Stevens Point, WI 54482
715.344.9999(PH) 715.344.9922(FX)

DEVELOPER:
PPF Commercial LLC
PARKSIDE ESTATES SUBDIVISION
CITY OF MENASHA
CALUMET COUNTY, WISCONSIN

PROJECT MANAGER:
J.L. FISCHER INC.
Member of "THE FISCHER GROUP"
4324 Grosbeak Glen * Windsor, Wisconsin 53598 * USA
Jfischer@thirdcoastconsultingllc.com
(920) 470-9349

SHEET:
PRELIMINARY PLAT
P.P.F. Commercial LLC, © 2010

DATE	BY	REVISIONS
1-18-07	Scott Groholski	2-5-07
		10-11-10
		10-23-10
		10-25-10
		10-29-10